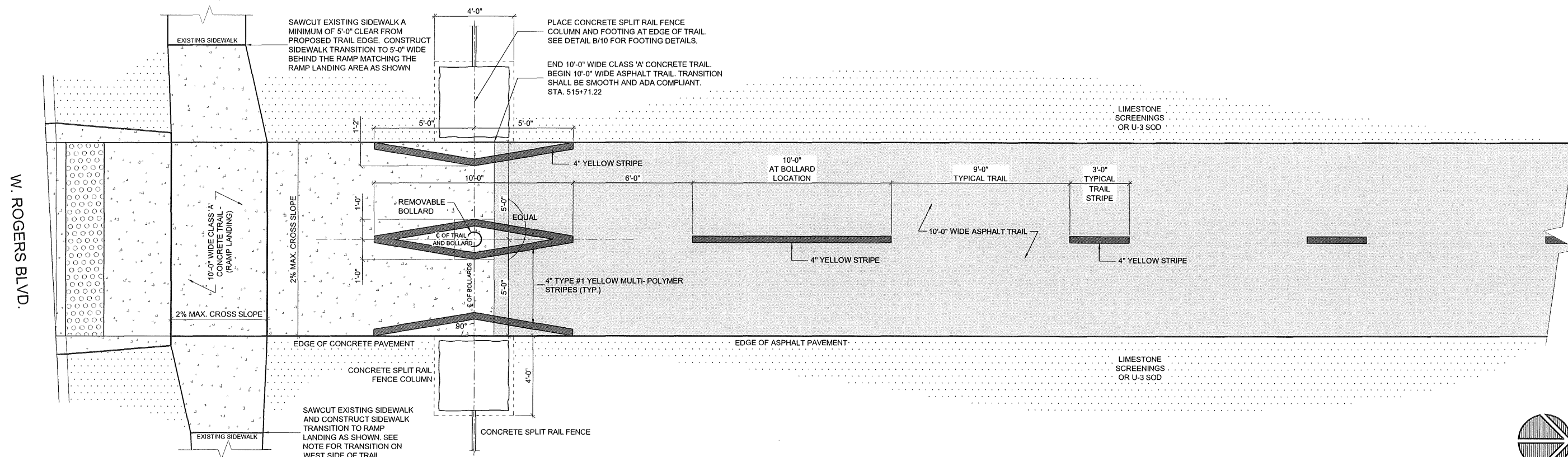


**STRIPING NOTES:**

- 1.) TRAFFIC STRIPING SHALL CONSIST OF 4" WIDE DASHED YELLOW STRIPES DOWN CENTER OF TRAIL TYPICALLY. EACH MULTI-POLYMER DASH WILL BE 3'-0" LONG. GAPS BETWEEN DASHES WILL BE 9'-0".
- 2.) STRIPING AT BOLLARD LOCATIONS IS AS SHOWN BELOW.
- 3.) NO PASSING ZONES ALONG TRAIL WILL BE DESIGNATED WITH A SINGLE SOLID YELLOW LINE.

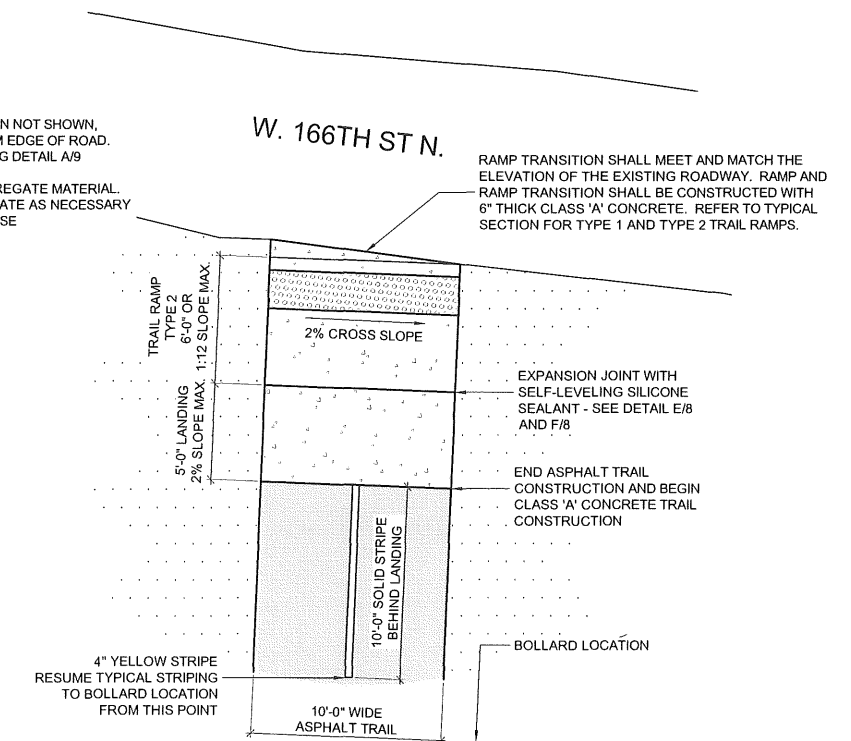
| OKLAHOMA DEPARTMENT OF TRANSPORTATION |       |                     |             |           |              |
|---------------------------------------|-------|---------------------|-------------|-----------|--------------|
| FED. ROAD DIST. NO.                   | STATE | PROJ. NO.           | FISCAL YEAR | SHEET NO. | TOTAL SHEETS |
| 6                                     | OKLA  | 28839(04) 32530(04) |             |           |              |
| DESCRIPTION                           |       |                     | REVISIONS   | DATE      |              |



**A** PLAN - STANDARD BOLLARD LOCATION WITH TRAIL STRIPING (North Side of W. Rogers Blvd.)  
**9** NOT TO SCALE

**NOTE:**

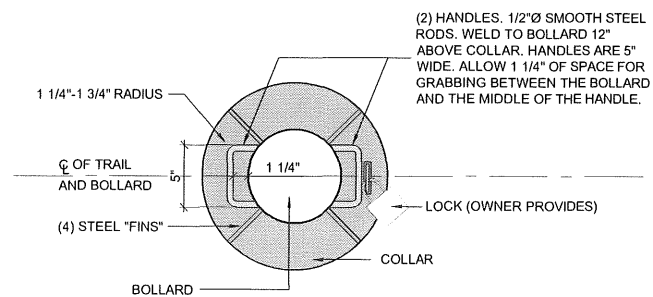
1. BOLLARD LOCATION NOT SHOWN, 77'-0" SOUTH FROM EDGE OF ROAD. REFER TO STRIPING DETAIL A/9
2. ROADWAY IS AGGREGATE MATERIAL FEATHER AGGREGATE AS NECESSARY TO MEET RAMP NOSE



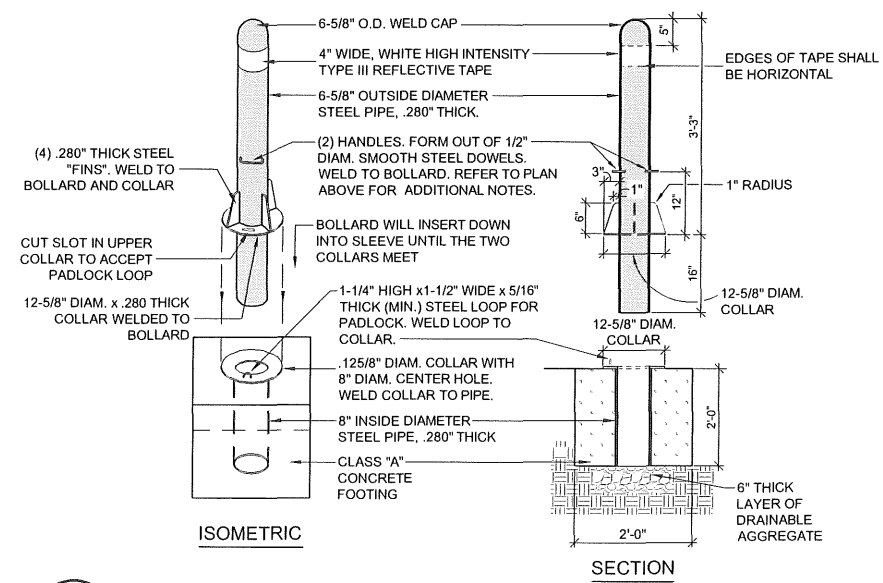
**B** PLAN - TYPE 2 RAMP / TRAIL TERMINUS AT W. 166TH ST N.  
**9** NOT TO SCALE

**BOLLARD NOTES:**

1. BOLLARD SHALL BE CONSTRUCTED SO THAT WHEN IN AN UPRIGHT POSITION AND LOCKED IT WILL STAND PLUMB.
2. WELDS SHALL BE 3/16" FILLET WELD. GRIND ALL WELDS AND EDGES SMOOTH.
3. BOLLARD SHALL BE PRIMED WITH A ZINC RICH PRIMER AND FINISHED WITH A BRONZE TIC POLYESTER POWDER COAT 2.5-3.0 MLS. THICK. SURFACE SHALL BE FREE OF RUST, OILS, ETC. PRIOR TO PAINTING. ENGINEER SHALL APPROVE COLOR PRIOR TO PAINTING. REFLECTIVE TAPE SHALL BE APPLIED HORIZONTALLY ON REMOVABLE BOLLARD AS SHOWN IN THE DETAIL.
4. REFLECTIVE TAPE SUBSTITUTION SHALL BE SUBMITTED FOR APPROVAL BY ENGINEER



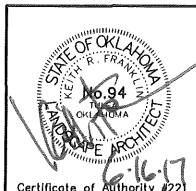
**C** PLAN VIEW - REMOVABLE BOLLARD  
**9** NOT TO SCALE



**D** DETAILS - REMOVABLE BOLLARD  
**9** NOT TO SCALE

F:\581 Osage Prairie Trail Ext\Final\581-Details.dwg, 6/14/2017 4:59:50 PM

Sta. 616+22.83 - 616+34.86



| Osage Prairie Trail Extension |       |      |
|-------------------------------|-------|------|
| Design                        | JM    | 8/16 |
| Drawn                         | JM/BB | 8/16 |
| Checked                       | JM/KF | 6/17 |
| Approved                      |       |      |
| Squad                         | LPCI  |      |

| PREPARED BY:   |  |
|--|--|
| LANDPLAN CONSULTANTS                                   | 1110 West 23rd Street TULSA, OK 74107 918-584-6164 |
| <b>CONSTRUCTION DETAILS (2)</b>                        |  |
| State Job No. 28839 (04), 32530 (04) Sheet No. 9 of 32 |  |